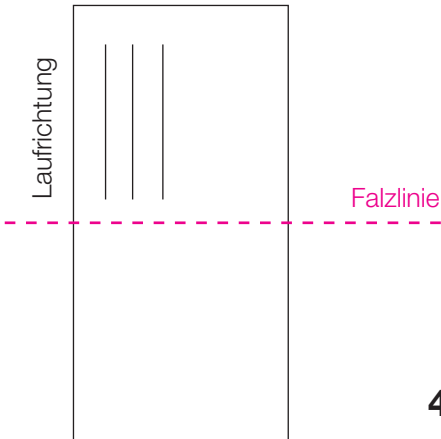
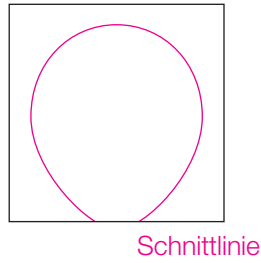


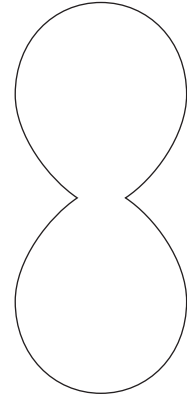
1) Krepppapier-Streifen
ca. 1,5 x 4 cm



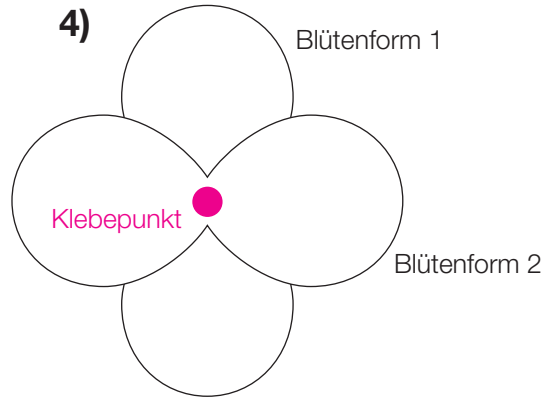
2) gefalteter Krepppapier-Streifen



3) ausgeschnittene Blütenform



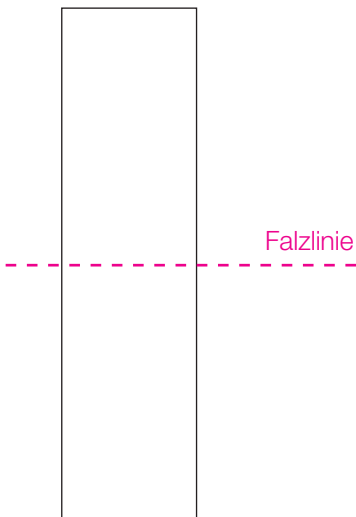
4) Blütenform 1



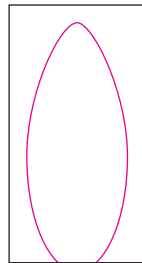
Blütenkelch
Krepppapier-Streifen
ca. 3 x 1 cm



5) Krepppapier-Streifen
ca. 1 x 5 cm



6) gefalteter Krepppapier-Streifen



7) ausgeschnittene Blattform



fertig zusammen-
geklebte Blüte

